

Give us a WOO!



Concrete Memorial Bases



Some fun facts about concrete..

- After water, concrete is the most widely used substance on earth.
- If the cement industry was a country, it would be the third largest Carbon Dioxide emitter in the world with up to 28 billion tonnes released per year.
- Concrete is how we tame nature (with structures) shelters, entomb our soil and choke our habitats.
- Our built environment is outgrowing our natural one.

Our blue and green world is becoming greyer by the second.

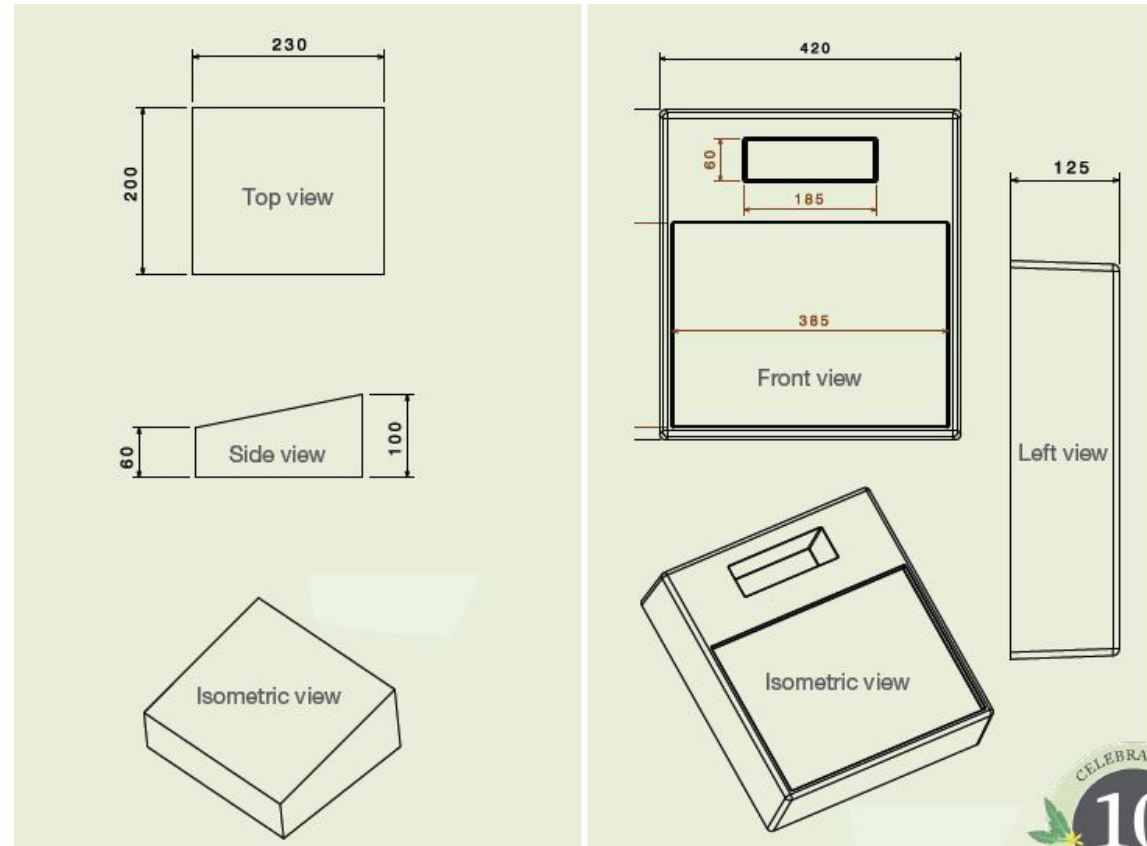


Sustainable Cemeteries & Dearly Plaques

A Concrete Substitute



Up to 30 Recycled 2Litre
Milk Bottles in the Base.



Up to 130 Recycled 2Litre
Milk Bottles in the Base.

Western Australia Waste Strategy

Waste Avoidance & Resource Strategy 2030

Overall objectives and state targets

Avoid	Recover	Protect
<i>Western Australians generate less waste.</i>	<i>Western Australians recover more value and resources from waste.</i>	<i>Western Australians protect the environment by managing waste responsibly.</i>
<ul style="list-style-type: none">2025 – 10% reduction in waste generation per capita2030 – 20% reduction in waste generation per capita	<ul style="list-style-type: none">2025 – Increase material recovery to 70%2030 – Increase material recovery to 75%From 2020 – Recover energy only from residual waste	<ul style="list-style-type: none">2030 – No more than 15% of waste generated in Perth and Peel regions is landfilled2030 – All waste is managed and/or disposed to better practice facilities

Southern Metropolitan Cemetery Trust (Melbourne)

– diversion of waste to landfill - Environmental Strategy 2022-25

2025 by 25%

2030 by 80%

2050 by 90%

(https://smct.org.au/uploads/SMCT478_EnvironmentalStrategyReport_F_2.pdf)



National Waste Targets

– Australian Government, Dept of Climate Change, Energy, the Environment and Water.
#3 of the 5 targets by 2025.

Increase the use of recycled material and build demand and markets for recycled products

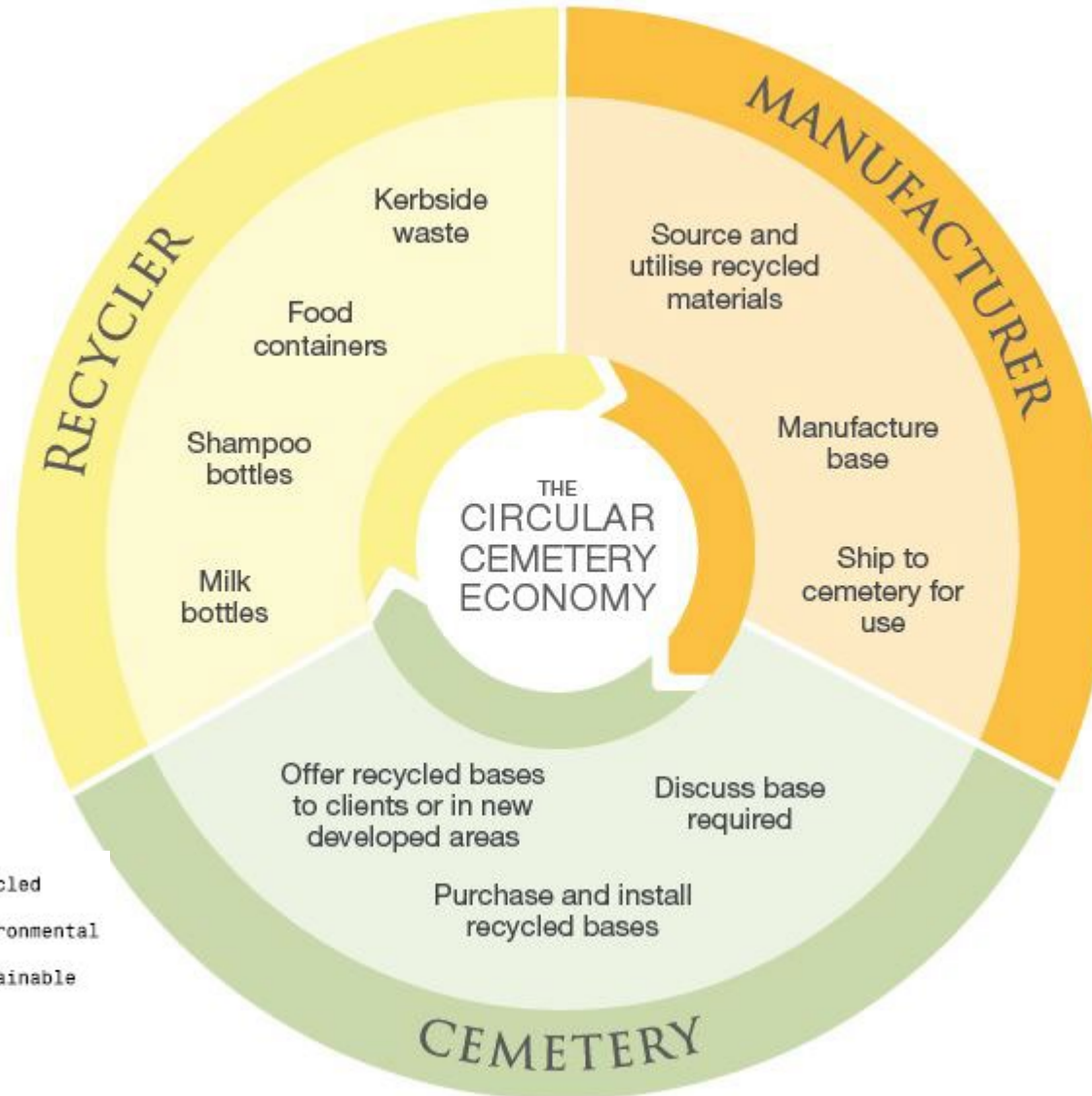
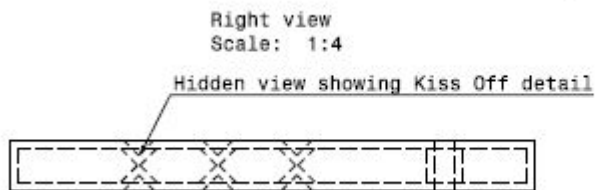
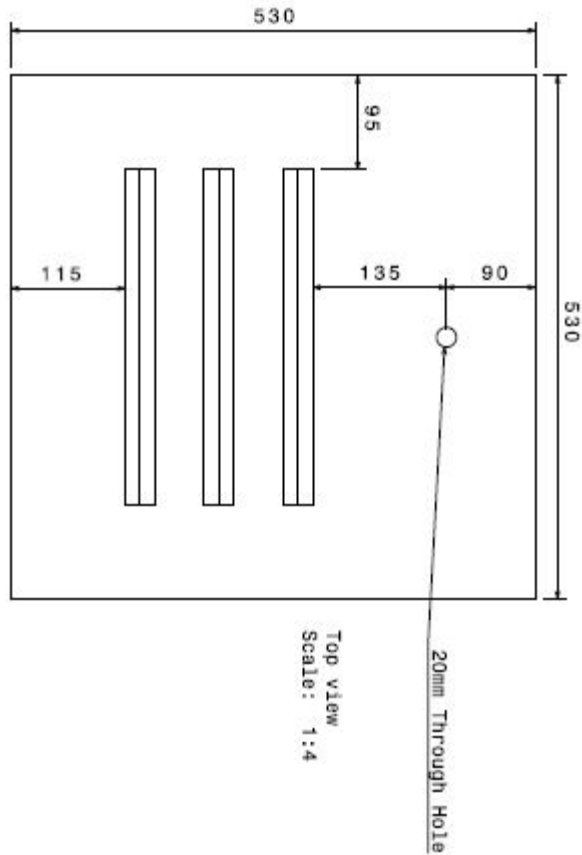
National Packaging Targets for industry (2025):

- 100% of packaging is reusable, recyclable or compostable
- 70% of plastic packaging goes on to be recycled or composted

(<https://www.dcceew.gov.au/environment/protection/waste/publications/national-waste-policy-action-plan>)



The Circular Cemetery Economy



Recycled
Environmental
Sustainable
Safe

